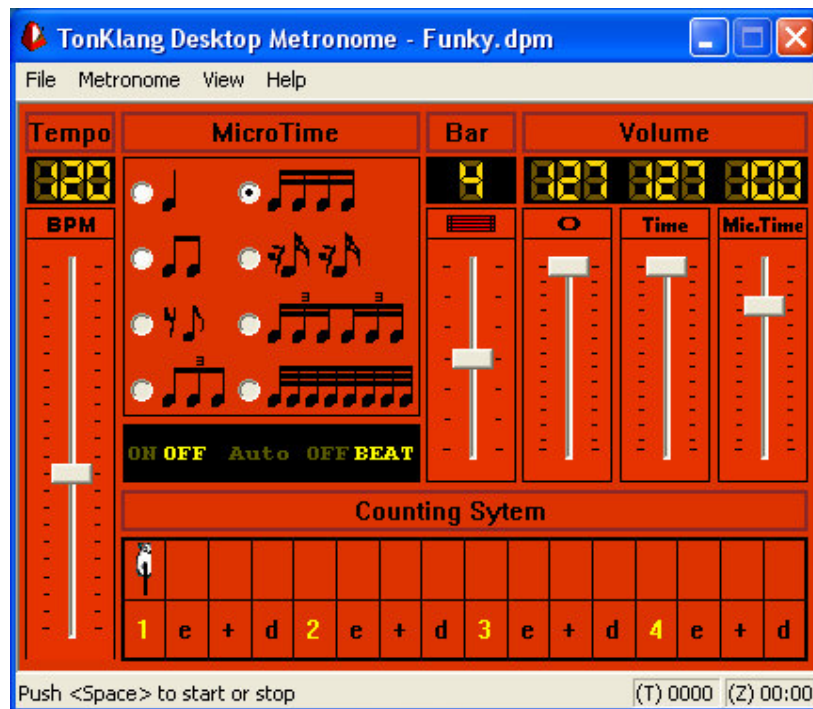


TonKlang Desktop Metronome

Manual

English



Contents

Intoduction.....	4
System Requirements	4
Installation	5

Term Explanation

Practice Pad, Practice Kit	6
About Tempo, Time, MicroTime	6
Countingsystems	7
Off Beat.....	8

Control Surface

Tempo	9
MicroTime	10
Bar/Measure	10
Volume Regulation	10
Display	11

Menu

File.....	12
------------------	-----------

Menu Metronome

Start / Stop	12
Auto Tempo Increase	13

Practice Time Info 15

Menu Metronom Settings

Midi-Instruments..... 16

Midi-Setup 16

MenuView

Statusbar 17

Keyboard Instructions..... 18

Troubleshooting..... 18

TonKlang - Software for Musicians

Desktop Metronome Version 1.0 ® 2005

Welcome !

About TonKlang Desktop Metronome...

The idea to create a Desktop Metronome was supported by the following factors: I need a metronome for my daily exercise at the Practice Pad at home, that in best ways supports for example my Reading- and rhythm – exercises to consolidate timing.

A conventional metronome is easy to handle but does not provide enough possibilities to consolidate Time/MicroTime and counting systems.

A Drumcomputer does provide enough possibilities, but it is too complicated, too expensive and you first have to program before it does what you want it to do for you. Use that time for your drum practice!

With *TonKlang Desktop Metronome* you have all important functions at a glance, each exercise individually to save to file as a preset.

System requirements : Pentium I, 233 MHz or higher, WIN98SE, Soundcard with MIDI-Support. If you want to use the metronome in your practice room, an older PC or Laptop therefor is also suitable.

What is "TonKlang Desktop Metronome" ?

TonKlang Desktop Metronome contains many functions, which help to substantially support your timing.

Features:

- Tempo adjustable from 30 to 240 BPM (beats per minute)
- graph of MicroTime with counting system
- Time and MicroTime in 3 groups: Beat, quarter-MicroTime and 7 MicroTimes to select
- simultaneous acustical Wiedergabe der 3 Gruppen
- free choice of MIDI-Instruments for each group
- seperate volume regulation for each group
- automatic increase of time
- documentation of your practising time

Installation of Tonklang Metronome

Start the Setup Program (Setup.Exe) from the TonKlang Installations-CD.

Follow the installation instructions of the Setup-Program

After successfully installing the Metronome you will find a „Metronome Symbol“ on your desktop and in your Programfile (Start->Programs-> TonKlang).

Click the „Metronome Symbol“ to start.

After the first time starting the program key in the Product-Code.
You find it on your invoice.

To start the metronome, please push <space> or click the start /stop button located in the Metronome Menu.

If you do not hear a sound after starting the metronome, you find further information to configure the Desktop Metronome for your system in the last chapter of the manual.

If you have any questions feel free to send an **Email** to:

support@tonklang.de

Definitions:

Practice Pad / Practice Kit

Aid for Drummers to practice in room sound.



Practice Pad

Tempo / Time / Microtime

Tempo or **Time** is being measured in bpm (beats per minute). That is the number of beats in a certain amount of time. Further division of the pulse into smaller parts is **microtime**.

Example binary microtime:

1		2		3		4		Pulse
1	+	2	+	3	+	4	+	microtime two part subDivision = eighth feel

Example ternary microtime:


1			2			3			4			Pulse
1	ta	ta	2	ta	ta	3	ta	ta	4	ta	ta	Mikrotime three part SubDivision = Triplet feel

Further Subdivisions:

- **four part SubDivision = sixteenth Feel**
- **six part SubDivision = Sixtuplet Feel**

You find more examples in „Counting Systems”.

Counting Systems

Counting System															
															
1	e	+	d	2	e	+	d	3	e	+	d	4	e	+	d

At the beginning counting is, if you are not used to it, difficult. It becomes easy after a while and your feeling for rhythm will develop. You will constantly improve your timing, you will begin to groove and become firm with your instrument while playing.

Counting aloud will pay for itself in many ways, for example when you use your inner timing later on, which will be there even in difficult live-situations.

Counting systems divide the beat in smaller subdivisions, the microtime. Especially when practising slower tempi it may be helpful to set the metronome to smaller units.

Binary Counting Systems

One part counting:

Time	1	2	3	4	
Count	1	2	3	4	(pronounced: one - two - three - four)

Two part counting:

Time	1		2		3		4		
Count	1	+	2	+	3	+	4	+	(pronounced: one - and...)

Four part counting :

Time	1			2			3			4							
Count	1	e	+	d	2	e	+	d	3	e	+	d	4	e	+	d	(Pronounced: one - e - and - duh...)

Ternary Counting Systems

Three part counting:

Time	1			2			3			4		
Count	1	tuh	tuh	2	tuh	tuh	3	tuh	tuh	4	tuh	tuh

Six part counting:

Time	1					2					3					4								
Count	1	tuh	tuh	+	tuh	tuh	2	tuh	tuh	+	tuh	tuh	3	tuh	tuh	+	tuh	tuh	4	tuh	tuh	+	tuh	tuh

Off Beat

Playing out of beat is called **Off Beat**. As Examples I show you here the Off Beats you may select in the control surface (MicroTime):

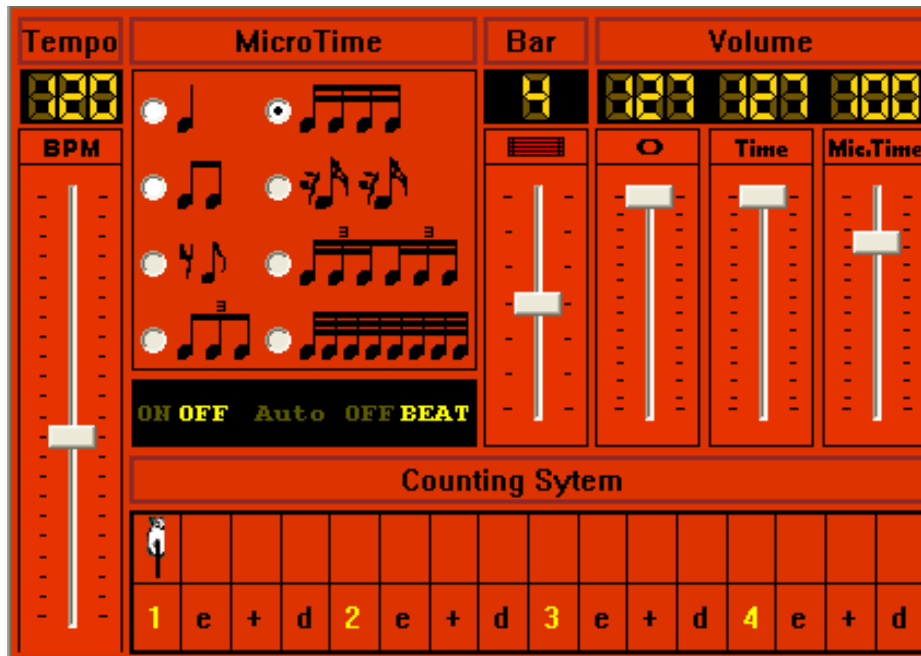
Eighth Off Beat

 	1		2		3		4		Beat
		and		and		and		and	Offbeat

Sixteenth Off Beat

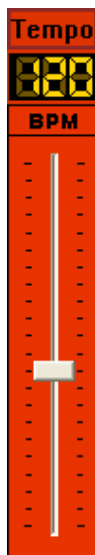
 	1	+		2	+		3	+		4	+		Beat
		e		d		e		d		e		d	Off Beat

The Control-Surface



Tempo

Note: If automatical increase of tempo is active you can not change tempo with the slider.

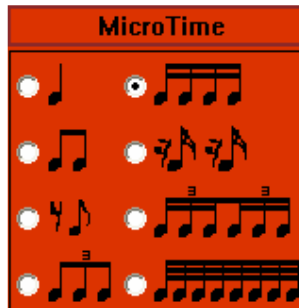


Choose tempo from 30 to 240 BPM (Beats per minute) here

40 ~ 60	Largo
60 ~ 66	Larghetto
66 ~ 76	Adagio
76 ~ 108	Andante
108 ~ 120	Moderato
120 ~ 168	Allegro
168 ~ 200	Presto
200 ~ 208	Prestissimo

You can also use your keyboard <arrow up> & <arrow down> .

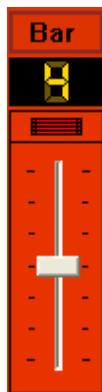
MicroTime



Choose Time, MicroTime, or Off Beats here. Volume is adjustable.

If you choose one of the Off Beats (8th Off or 16th Off) you will see it in the display below.

Bar/Measure



- Choose the number of beats in one measure.
- You can choose from one to seven beats per measure.

Is the number of beats per measure more than 4, you will see a blue arrow on the right side and the display for counting system switches to next page after the fourth bar.



Volume regulation

Volumeslider



O	Volume of the first beat in measure
Time	Volume of all beats in measure
Mic.Time	Volume of MicroTime and Off Beats

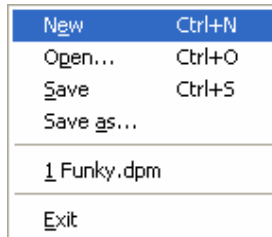
Tip: If you mark one slider with the mouse, you can control the marked slider with keyboard <arrow to the right> and <arrow to the left>. The keys <arrow up> and <arrow down> are reserved to regulate the tempo.

Display**ON OFF Auto OFF BEAT**

On :	Metronome is in play – mode
Off :	Metronome is in stop - mode
Auto :	Automatical increase of tempo is activated
Beat :	The metronome plays your selected micro time
Off Beat :	Metronome plays Eighth or Sixteenth Off Beats

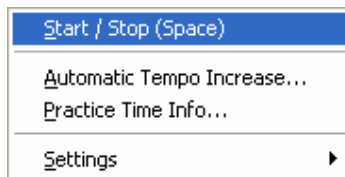
Menu

Menu 'File'



New	Creates a new document
Open	Opens a document.
Save	Stores a document.
Save as	Saves a document under a given filename.
Exit	Exits the application.

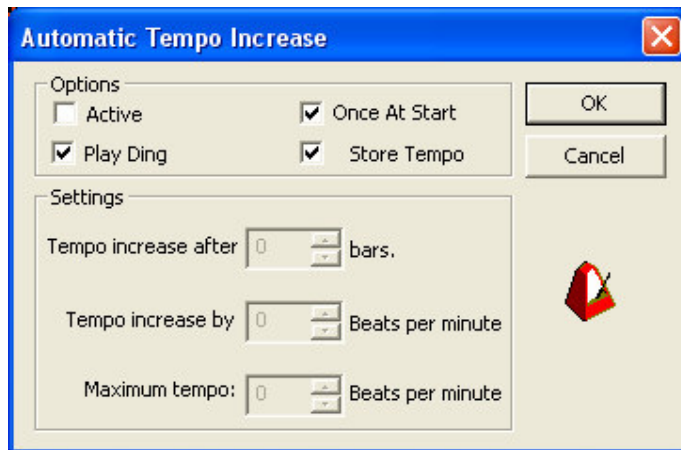
Menu 'Metronome'



Menu Metronome: 'Start / Stop'

Start or stop the metronome.
 You see the actual mode in the display below.
 You can use also your keyboard with the key <Space>.

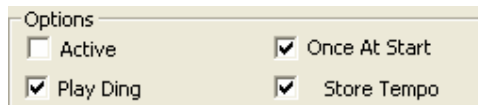
Menu Metronome: 'Automatic Tempo Increase'



The *automatic increase of tempo* supports your practice of speed.

Tip: Start with a tempo you feel comfortable with and adjust the maximum speed to your limit of drumming ability. Practice every Day from your comfortable speed to your limit. Once you feel comfortable with your limit, set yourself a new limit.

Options:



Active:

Activates oder deactivates die *Automatic-Tempo-Increase*.

If the *Automatical increase of Tempo* is active, the Temposlider does not react to mouse or Keyboard control. The Tempo will be changed according to your prescriptions.

Acoustic signal:

With the acoustic signal activated, you get a sound from the system before each automatic change of tempo. If you wish to change the sound from the system you find more information in Online-help of your Operating System.


Once at Start:

There are two options for automatic increase of tempo: "*Once At Start*" increases the tempo only when you start the metronome. If "*Once at Start*" is deactivated, tempo will be increased automatically after your preselected number of measures. The Bar indicator (T) located at the statusbar counts back from your preselected number of measures to 1, increases the tempo and begins again with your preselected number.

Store Tempo:


With this option you can save tempo together with other features in your file. In some cases it is better to begin with the same tempo and increase slowly. You could deactivate the option "*Store Tempo*". CAUTION: The program always starts with the adjustments of your last session. Therefore you first have to open your file to start with the slower tempo.

Tempo increase after...

Tempo increase after  bars.

Is "*Once At start*" is active, you can fix the number of measures after which you wish to increase tempo here. In the other case this option does not react.

Tempo increase by...

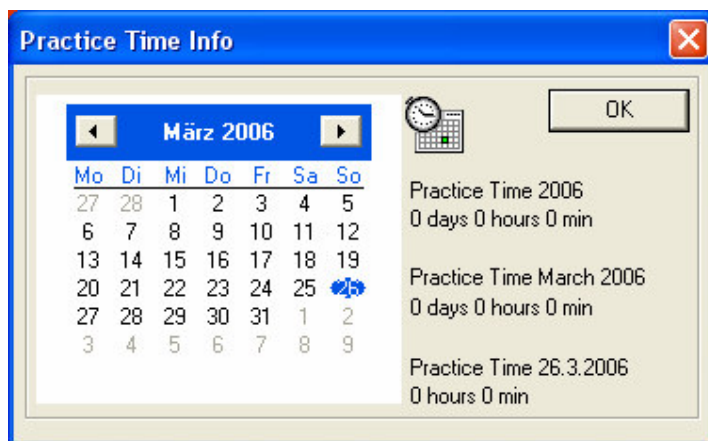
Tempo increase by  Beats per minute

Set here by how many beats per minute you wish to increase the tempo.

Maximum tempo

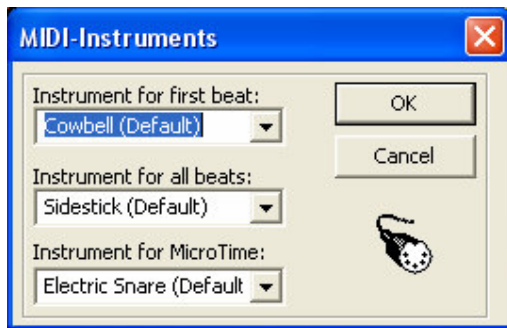
Maximum tempo:  Beats per minute

Set here to which limit you wish to increase tempo.

Menu Metronome: 'Practice Time Info'

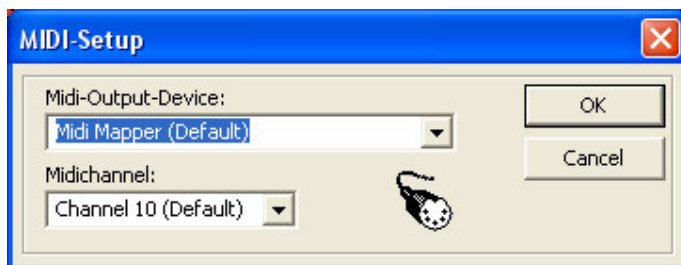
Practice Time Info shows the amount of time you actually spent with practising. The time from starting to stopping the metronome is being measured.

Menu Metronome Settings: "Midi-Instruments"



Select here the drumset & percussion instruments for 3 groups. Preset is marked as „Default”
If you do not like your selected instruments you can return to original instruments with „default”.

Menu Metronome Settings: "Midi-Setup"



Select MIDI - Output - Device:

The *Default Setting is Midi Mapper* which is available on every windows system. Midi-Mapper use the in the operating system selected MIDI-Output-Device . The number of MIDI-Output-Devices depends on your sound system. CHANGE these settings can cause a better sound. This depends on the Output-Device..

Select the MIDI-Channel:

The Default Setting Channel 10 is normally the Channel for Drum and Percussion Sounds. This Channel is chosen for nearly all systems for Drumming and Percussion Sounds. If you hear with starting the metronome for example a pianosound you can change it here (try channel 16) to percussion and Drumset sounds.

Menu 'View'

Statusbar Switches the Statusbar On or Off.

Statusbar**Bars (T):**

Normal Mode:

Shows the current bar number.

Mode "Automatic-Tempo-Increase":

If *automatic-Tempo-Increase* is activated, and „Once At Start“ is NOT selected, the Bar decreases from the selected "Bars" down to 1, then the Tempo increases about the selected tempo.

Time (Z) :

(Z) shows the practice time per day.

Keyboard

<Space> Start & Stop

<Enter> Automatische Temposteigerung On & Off

<Arrow up> Tempo +

<Arrow down> Tempo -

<Arrow left> Activated slider up

<Arrow right> Activated Slider down

<Ctrl + N> File new

<Ctrl + O> File open

<Ctrl + S> File close

<F1> Help

Troubleshooting

Problem:

You hear no sound after Metronome started...

Solutions:

- Make shure that the PC-Speakers are working
- Check if your sound-card and device – driver are installed correctly.
- Change MIDI-Divice or MID-Channel in the MIDI-Settings of the Metronome if nessecary.

Problem:

You can not change the tempo slider...

Solution:

Deactivate the Automatic-Tempo-Increase function

Problem:

The Tempo changes not automaticly...

Solution:

Increase the maximum amount of bars in the “Automatic-Tempo-Increase” dialog box